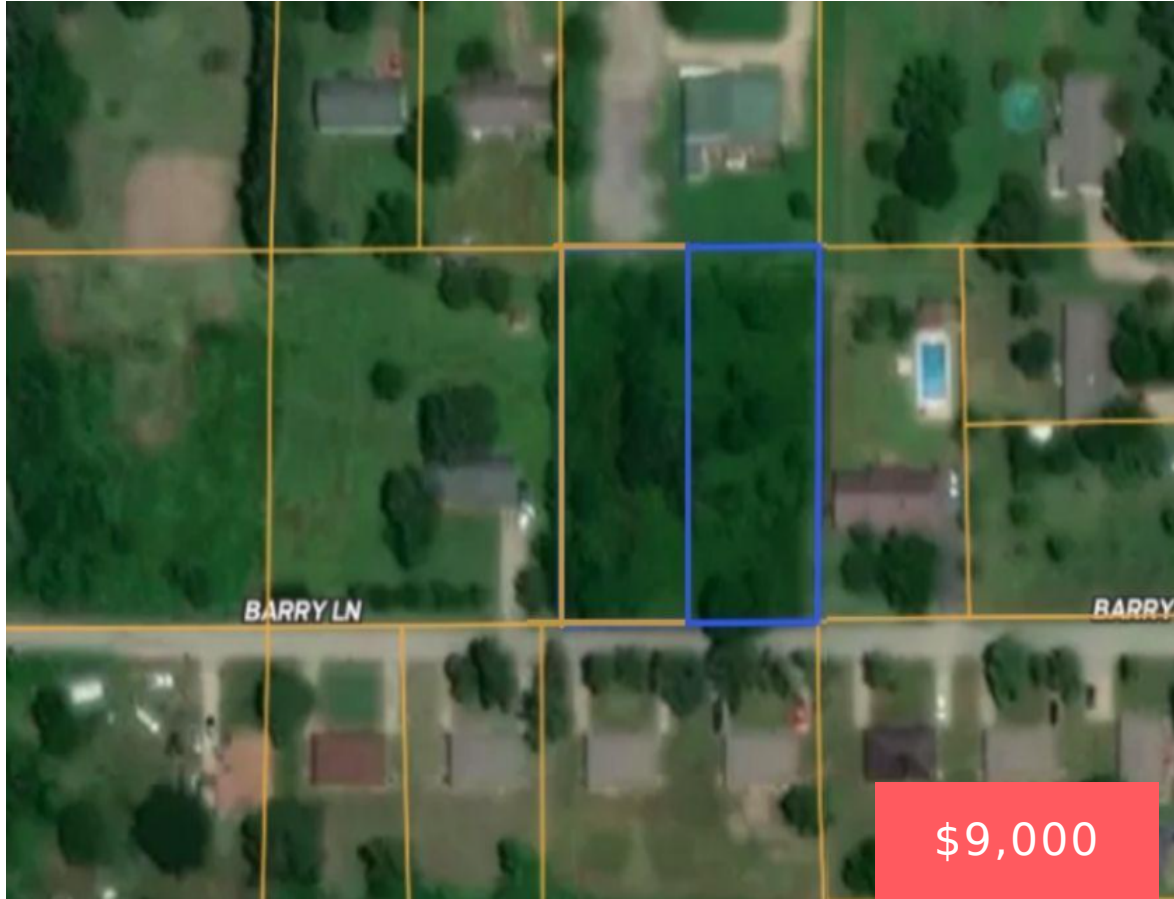


AFFORDABLE 0.5-ACRE LOT IN BLYTHEVILLE, AR - PEACEFUL LOCATION WITH GREAT POTENTIAL!

<https://landsellers.net>

X2QM+V7H,
Gosnell, AR 72315,
USA



Looking for a budget-friendly piece of land in a quiet, convenient area? This 0.5-acre lot on E County Road 38 in Blytheville, Arkansas could be the perfect fit! Located just minutes from town, this flat and spacious property offers a peaceful rural setting with easy access to everyday essentials. Whether you're dreaming of building a cozy home, [...]

- Land For Sell
- Vacant Land
- Active



Shawn Salami
(877) 505-5007

Basics Information



Call us now

Email: Support@LandSellers.net



Category: Vacant Land

Status: Active

Zoning: Residential

Annual Taxes: \$18.17

External Weblink: <https://mrlandseller.com/P/499817-1/>

Date added: Added 1 month ago

Type: Land For Sell

Access: Paved Road

Lot size, acres: 0.5 acres

APN#: 106-03989-000

Utilities & Services: Electricity,
Water Service

Amenities & Features

Feature: Owner Finance



Call us now

Email: Support@LandSellers.net

