

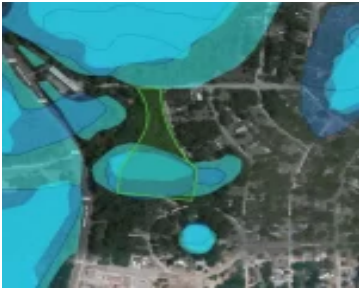
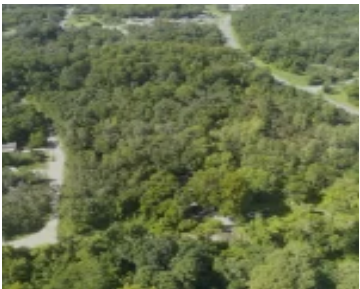
4.7 ACRES - MOBILE HOMES ALLOWED, POWER,
GRAVEL ROAD ACCESS, IN NEW PORT RICHEY, PASCO
COUNTY FL

<https://landsellers.net>

Gilbert St, Moon
Lake Estates, FL
34654, USA



\$178,999



This perfectly situated 4.7 acres property has fairly flat terrain, plenty of trees and character, and is big for this area that has mostly been chopped up into small lots. It's for a new home with plenty of space to enjoy, or an investment. Both Port Richey and Elfers are within about 20 minutes and [...]

- Land For Sell
- Vacant Land
- Active



compasslandusa.com

Basics Information



Call us now

Email: Support@LandSellers.net



Category: Vacant Land

Status: Active

Zoning: Residential

Annual Taxes: \$542

External Weblink:

<https://www.compasslandusa.com/property/4-7-acres-corner-lot-with-power-near-highway-in-new-port-richey-pasco-county-fl/>

Type: Land For Sell

Access: Dirt Road

Lot size, acres: 4.7 acres

APN#:

21-25-17-0120-00000-00A0

Date added: Added 8 months ago



Call us now

Email: Support@LandSellers.net

