

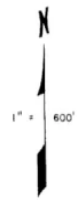
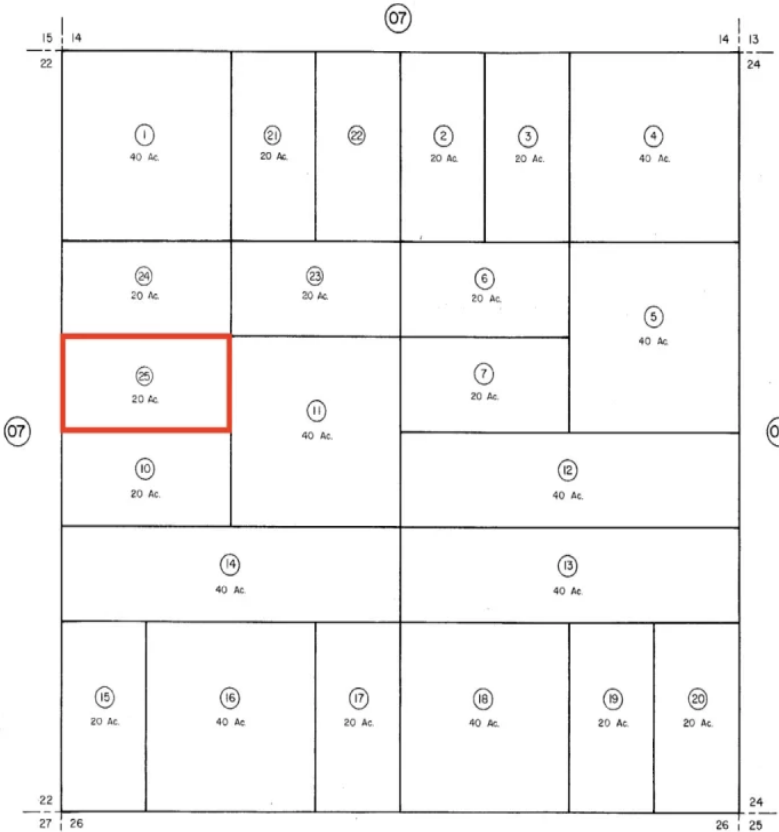
20 ACRES • IMLAY (MILL CITY) NV • POWER + GREAT ACCESS • ONLY \$279/MONTH — NO CREDIT CHECK!

<https://landsellers.net>

Mill City, NV 89418, USA

Sec. 23, T33N, R35E

08-08



\$19,945



□ Incredible Scenery + Easy Access — Minutes From I-80! □ Pershing County | Imlay (Mill City), Nevada □ Just minutes off Interstate 80 (Frontage Road Exit) □ Sale Price: \$19,945 □ \$495 Deposit | \$279/Month | 2% Low Interest □ No Credit Check • No Prepayment Penalty • No HOA Agar aap wide-open Nevada land chahte hain [...]

- Land For Sell
- Vacant Land
- Active



Prime Land Investments

Basics Information



Call us now

Email: Support@LandSellers.net



Category: Vacant Land

Status: Active

Zoning: Agricultural

Lot size, acres: 20 acres

APN#: 008-080-25

Date added: Added 6 months ago

Type: Land For Sell

Access: Dirt Road

Terrain: Flat

Annual Taxes: \$89

Utilities & Services: Electricity, Water Service, Cell Service

Description

Directions: ☐ Easy Owner Financing ✓ Sale Price: \$19,945 ✓ Deposit: \$495 ✓ Monthly Payment: \$279 ✓ Interest: 2% ✓ No Credit Check ✓ No Prepayment Penalty

Amenities & Features

Feature: Owner Finance



Call us now

Email: Support@LandSellers.net

