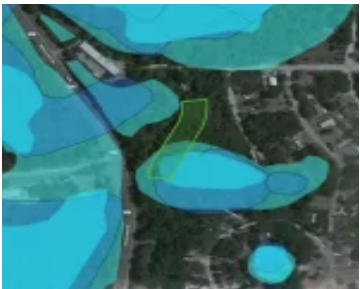
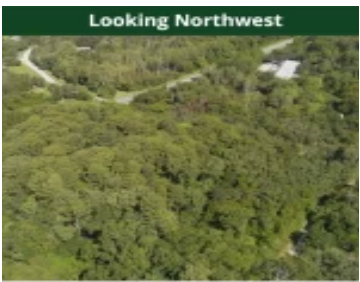
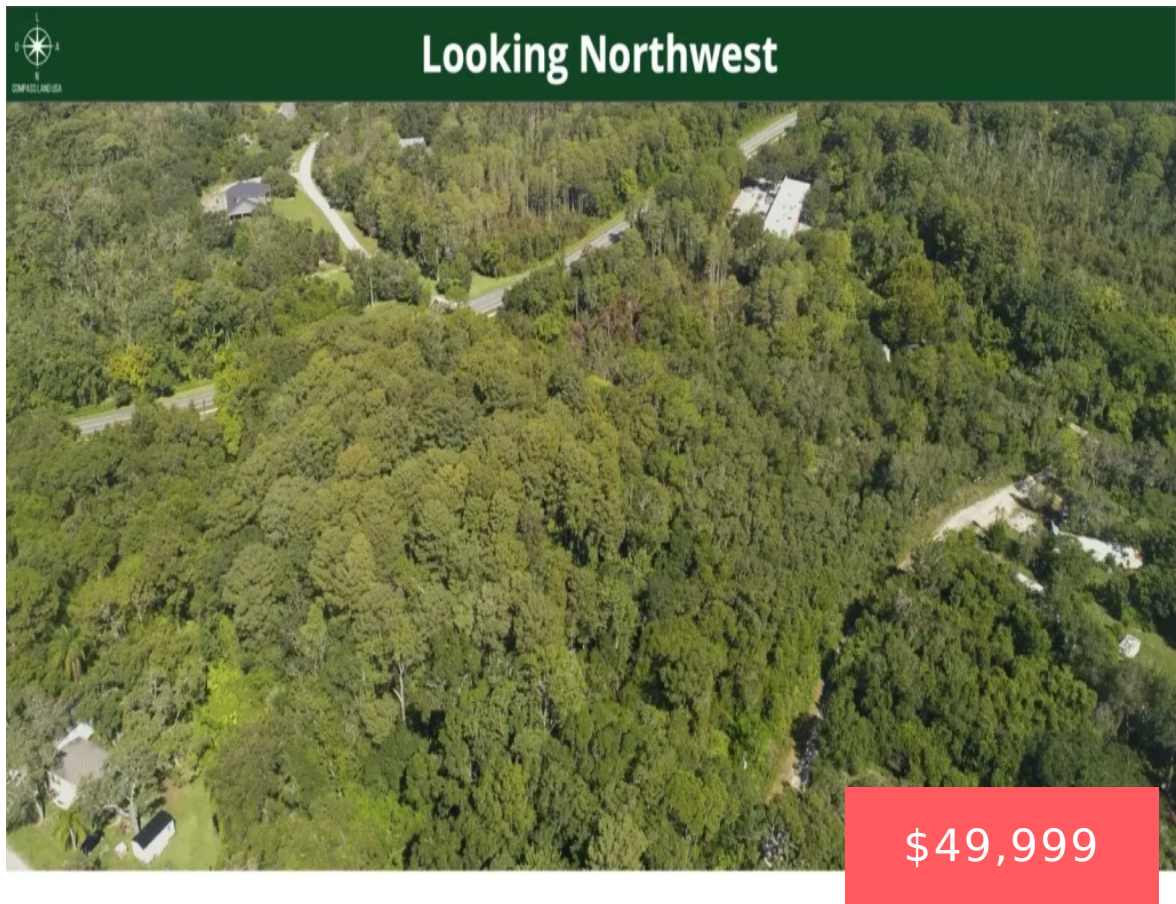


1.28 ACRES - MOBILE HOMES ALLOWED, 150 FT FROM
PAVED ROAD ACCESS, IN NEW PORT RICHEY, PASCO
COUNTY F

<https://landsellers.net>

Moon Lake Rd,
Florida, USA



This perfectly situated property has fairly flat terrain, plenty of trees and character, and is big for this area that has mostly been chopped up into small lots. It's for a new home with plenty of space to enjoy, or an investment. Both Port Richey and Elfers are within about 20 minutes and offer you a wide range [...]

- Land For Sell
- Vacant Land
- Active



compasslandusa.com

Basics Information



Call us now

Email: Support@LandSellers.net



Category: Vacant Land

Status: Active

Zoning: Residential

Annual Taxes: \$194

External Weblink:

<https://www.compasslandusa.com/property/1-28-acres-power-70-feet-away-near-highway-in-new-port-richey-pasco-county-fl-1-of-2-adjoining-parcels/>

Type: Land For Sell

Access: Paved Road

Lot size, acres: 1.28
acres

APN#:
21-25-17-0120-20900-0060

Date added: Added 8
months ago



Call us now

Email: Support@LandSellers.net



LandSellers.net