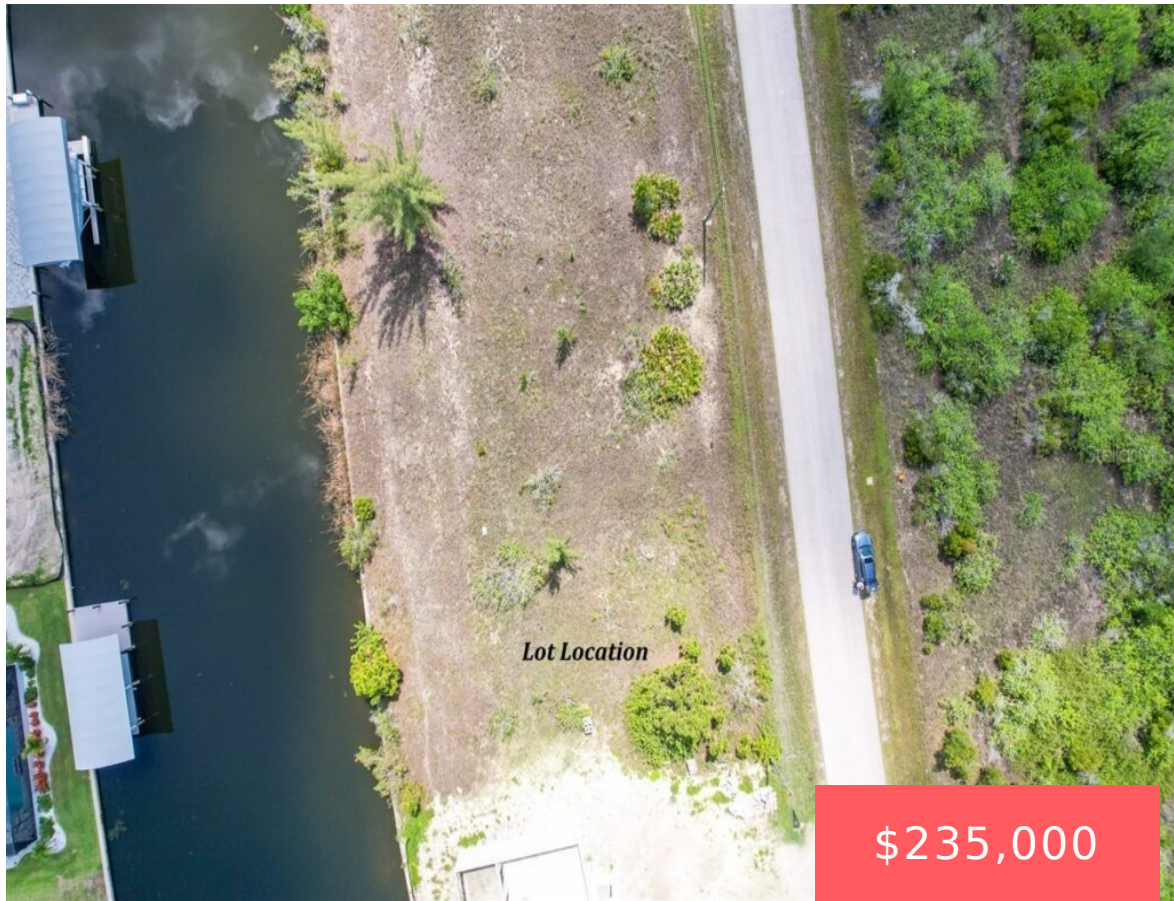


0.23 ACRES FOR SALE IN PORT CHARLOTTE, FLORIDA

https://landsellers.net

15068 Aquarius Cir,
Port Charlotte, FL
33981, USA



WATERFRONT LOT WITH SAILBOAT ACCESS! EASY OUT TO CHARLOTTE HARBOR AND GULF OF MEXICO! This lot has a little more water frontage than others at 83.4' and has a concrete sea wall. Come build your dream home and enjoy the community of South Gulf Cove. A survey has been done and is available. This community [...]

- Land For Sell
- Vacant Land
- Active



Allison James

Basics Information



Call us now
Email: Support@LandSellers.net



Category: Vacant Land

Status: Active

Zoning: Residential

APN#: 412115157009

Type: Land For Sell

Access: Paved Road

Lot size, acres: **0.23** acres

Date added: Added 7 months ago

Amenities & Features

Feature: Water Front



Call us now

Email: Support@LandSellers.net

